

# EV REACH VS BOMGAR

DISCOVER THE BEST ALTERNATIVE TO BOMGAR



## Looking for a BOMGAR Alternative?

Read our side-by-side comparison to understand the key differences between the two remote management solutions and why Goverlan is the best alternative.

# Goverlan outranks Bomgar, Microsoft SCCM, Kaseya VSA and many others in end-user satisfaction, depth of features and usability

### Switch to our solution to benefit from:

**Simple low price** that includes maintenance and upgrades with no hassle fees

**Unlimited** internal and external endpoints

**No steep learning curves**

**No session timeouts** for unattended access

**Friendly and intuitive** user interface

**Fast implementation** with no pre-configuration or hardware necessary

**Real-time & speedy management** engine

**No pushed advertising** or self-promoting pop-ups

**Great Customer Support**

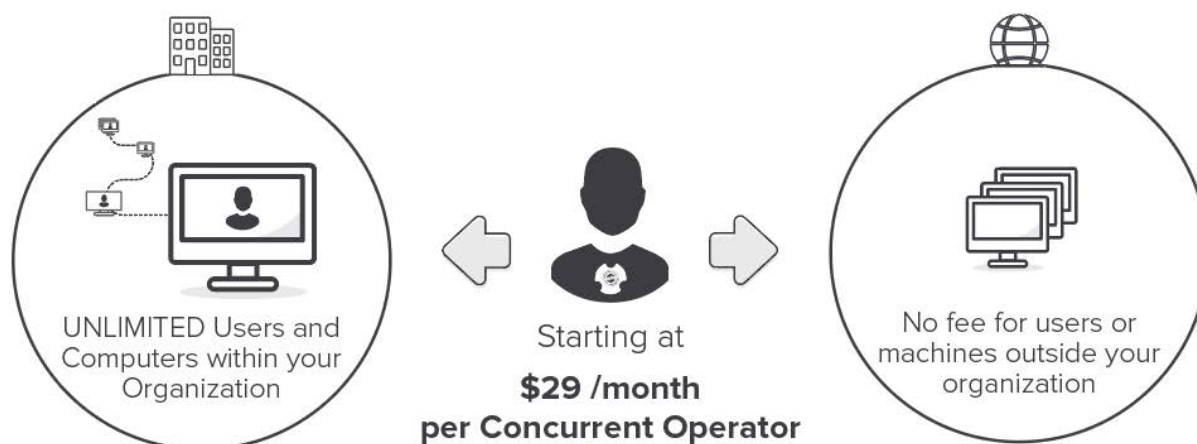
**Wide array of features** not available in Bomgar like:

- Software deployment
- RDS shadowing
- Screen monitoring
- Printer management and moreover leaving the Goverlan Reach console.

## GOVERLAN'S KEY DIFFERENTIATORS

### Sensible Pricing

Goverlan Reach is licensed on a per-tech basis starting at \$29 per month, with unlimited management of end-users and machines within your organization. If you need to manage devices outside of your organization over-the-internet, a node license only costs \$6 per year (price decreases with volume).



### Service Delivery Format

Bomgar services are delivered as a SaaS offering or an on-premises hardware appliance. Goverlan Reach is an on-premises Software-based application. It doesn't require any dedicated hardware or pre-configuration on your infrastructure. Simply install the Goverlan Reach Console on the operator's machines and you are ready to manage your organization!

### Intuitive with No Learning Curve

Uncluttered user interface, intuitive work flow, active directory integration with search capabilities, effortless access to users and systems' information are a few of the benefits you get with Goverlan Reach. Eliminate learning curves and be productive faster.

### When Speed is of Essence

Goverlan Reach's real-time technology permits almost instantaneous connection to systems whether they are inside or outside of your organization. Avoid lags and delays when immediate action is required.

### White Labeling and Branding


Goverlan Reach can be fully branded and personalized to deliver an end-to-end seamless experience to users and their IT department or Managed Service Provider.

# GOVERLAN VS BOMGAR: WHO HAS THE MOST VERSATILE SOLUTION?

## SIDE BY SIDE COMPARISON ON KEY FEATURES

	GOVERLAN REACH	B
INTEGRATION		
<b>Centralized Configuration &amp; Auditing</b> Control the behavior and configuration of operators and clients via centrally configured policies	✓	✓
<b>Automatic Agents Deployment / Maintenance</b> The solution can remotely deploy and manage its agents on client machines without end-user interaction.	✓	×
<b>Client Side White Labeling</b> Ability to customize client side user experience with personalized text and branding.	✓	limited
REMOTE DESKTOP ACCESS		
<b>Active Directory Integration</b> Ability to access endpoints or users by browsing or searching Active Directory	✓	×
<b>Peer-to-Peer Sessions</b> Establish a direct connection between operator and endpoints without the need of a third-party broker.	✓	✓
<b>On-Demand / Unattended Sessions over the internet</b>	Unlimited Seccions/ Endpoints	✓
<b>Discover where users are logged-on and jump into remote control</b> Detection of user's logged-in computer based on a user name or ID	✓	×
<b>Remote Access Protocols Supported</b>	Proprietary MS RDP VNC Intel vPro™ KVM Telnet / SSH	Proprietary MS RDP Intel vPro™ KVM Telnet / SSH
<b>Supports Citrix &amp; MS RDS Session Shadowing</b> Ability to access user virtual session within a Citrix XenDesktop / XenApp or Microsoft TS environment	✓	×
<b>Multi-Session Screen Activity &amp; Performance Counter Monitoring</b> Monitor the screen activity and performance counters of groups of machines within a single view	✓	×
<b>SmartCard Redirection</b>	✓	✓
<b>Session Capture to Video/Snapshot</b>	✓	✓
USERS & ENDPOINTS MANAGEMENT		
<b>Active Directory Account Management</b> Account creation, modification, group membership configuration, password management	✓	×
<b>Query System Information</b> Including BIOS, OS, Hardware, Vendor & Make information	✓	✓
<b>Intel® vPro Support</b> Supports Intel® vPro technology for out-of-band management	✓	✓
<b>Network Configuration Management</b> Ability to query and modify network configuration (IP / DNS / DHCP)	✓	×



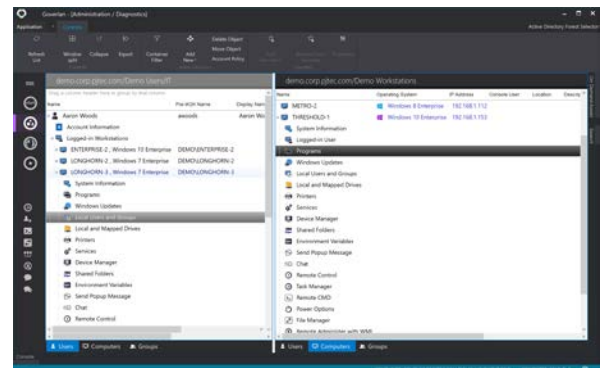
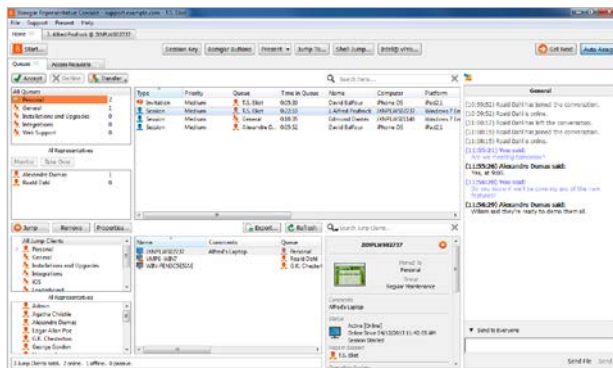
<b>Identity &amp; Domain Relationship Management</b> Ability to rename, join or unjoin endpoints to an Active Directory domain	✓	×
<b>User Session Management</b> Lock session, logoff/reset user session, configure auto-login	✓	×
<b>Discover where users are logged-on and jump into remote management</b> Ability to detect and report the computers in which a user is currently logged-in to allow their management	✓	×
<b>Report User Login Events</b> Report the trail of users who logged-in to a system or the trail of machines a user has logged into	✓	×
<b>User Drive / Printer Mappings Management</b> Report and configure drive mappings and printers available to users	✓	×
<b>Power Management</b> Shutdown, standby, reboot, restart systems	✓	 <b>Limited</b> (reboot only)
<b>Running Processes / Startup Programs / Performance Monitoring</b> Report upon running processes, startup programs and performance counters, start, terminate or configure processes	✓	 <b>Limited</b> (report and terminate processes only)
<b>File System Management</b> Ability to report upon and change the content of remote endpoint file system (file and directory move, delete, rename etc.)	✓	
<b>Software &amp; Patch Deployment &amp; Inventory</b> Report installed applications & updates, deploy software and patches, remove or repair programs.	✓	 <b>Limited</b> (report and uninstall only)
<b>Services &amp; Devices Management</b> Report and manage system services and device drivers	✓	
<b>Local Account Database Management</b> Report and manage local accounts and groups	✓	×
<b>Shared File Resources Management</b> Report, create, modify shared file system objects	✓	×
<b>PowerShell / VB Script Generator</b> Generate PowerShell scripts for user defined actions (using WMI)	✓	×
<b>Remote Script Execution</b> Ability to distribute and remotely execute locally stored PowerShell or VB scripts	✓	
<b>Remote Shell / Command Prompt Access</b> Ability to access shell access of a remote system	✓	
<b>GLOBAL CHANGE MANAGEMENT via IT AUTOMATION</b>		
<b>Generate granular and comprehensive IT reports</b> Report on Active Directory objects or remote systems (for instance, user login history or system's software inventory)	✓	×
<b>Automate Repetitive or Complex Global IT Processes</b> Create computer management tasks and Active Directory workflow automations, then run them globally or on a scope of targets.	✓	×
<b>Scan, Detect and React</b> Scan and detect non-compliant configurations of a group of Active Directory objects or computers, and provide remediation. All in one IT automation.	✓	×

# USABILITY: AN IMAGE IS WORTH A THOUSAND WORDS

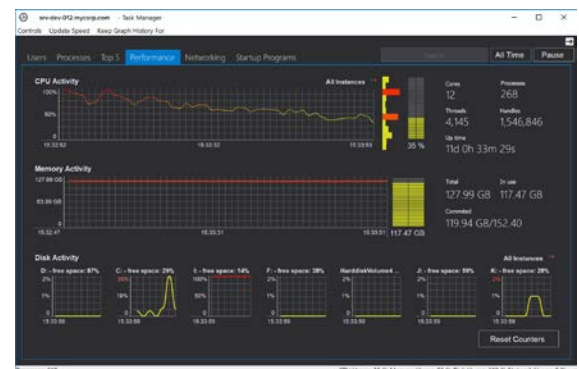
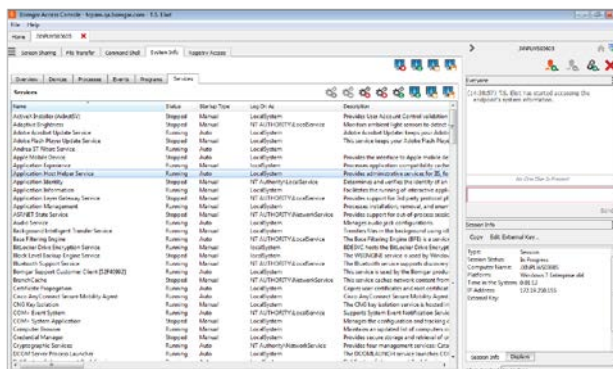
## BOMGAR

## GOVERLAN REACH

### Representative Console



### Processes & Performance Management



### Remote Desktop Access

