

 508

SECTION 508 COMPLIANCE

Extend the reach of your IT services with the industry's most preferred, powerful and secure solution

Synopsis

This document provides compliance information with regards to Section 508 Standards for Goverlan's software products. This publication applies to Goverlan v7.01.30 and later and WMIX v2.01.06 and later.

Overview

Section 508 is part of the Rehabilitation Act of 1973, as amended (29 U.S.C. 794d). Section 508 requires that when Federal agencies develop, procure, maintain, or use electronic and information technology, Federal employees with disabilities have access to and use of information and data that is comparable to the access and use by Federal employees who are not individuals with disabilities, unless an undue burden would be imposed on the agency. Section 508 also requires that individuals with disabilities, who are members of the public seeking information or services from a Federal agency, have access to and use of information and data that is comparable to that provided to the public who are not individuals with disabilities, unless an undue burden would be imposed on the agency.

Compliance Table

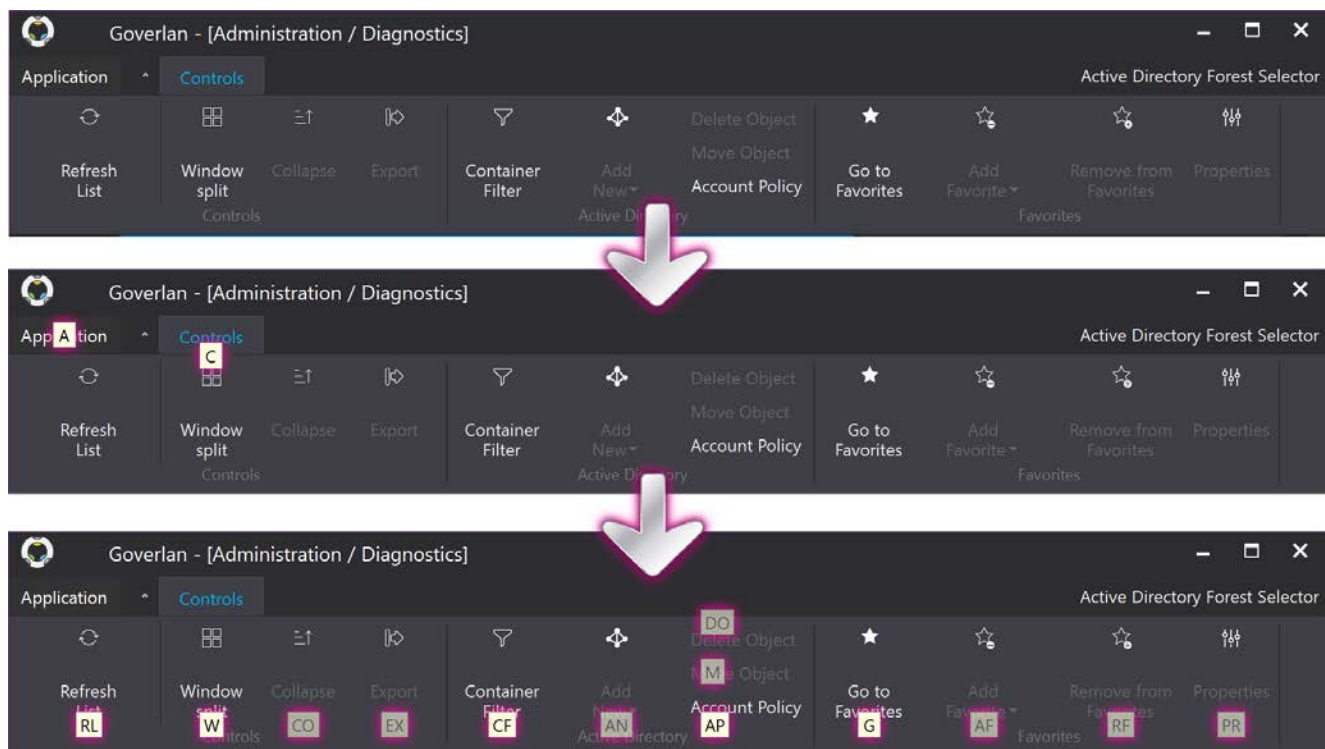
Section 508 - § 1194.21 Software applications and operating systems	Goverlan Software Products
(a) When software is designed to run on a system that has a keyboard, product functions shall be executable from a keyboard where the function itself or the result of performing a function can be discerned textually.	✓ See: Instruction A
(b) Applications shall not disrupt or disable activated features of other products that are identified as accessibility features, where those features are developed and documented according to industry standards. Applications also shall not disrupt or disable activated features of any operating system that are identified as accessibility features where the application programming interface for those accessibility features has been documented by the manufacturer of the operating system and is available to the product developer.	✓
(c) A well-defined on-screen indication of the current focus shall be provided that moves among interactive interface elements as the input focus changes. The focus shall be programmatically exposed so that assistive technology can track focus and focus changes.	✓
(d) Sufficient information about a user interface element including the identity, operation and state of the element shall be available to assistive technology. When an image represents a program element, the information conveyed by the image must also be available in text.	✓
(e) When bitmap images are used to identify controls, status indicators, or other programmatic elements, the meaning assigned to those images shall be consistent throughout an application's performance.	✓
(f) Textual information shall be provided through operating system functions for displaying text. The minimum information that shall be made available is text content, text input caret location, and text attributes.	✓
(g) Applications shall not override user selected contrast and color selections and other individual display attributes.	✓
(h) When animation is displayed, the information shall be displayable in at least one non-animated presentation mode at the option of the user.	✓ Our applications have an option to disable optional animation.
(i) Color coding shall not be used as the only means of conveying information, indicating an action, prompting a response, or distinguishing a visual element.	✓ Some color coding is used to clarify an object type; however, the primary type indicator is always textual.
(j) When a product permits a user to adjust color and contrast settings, a variety of color selections capable of producing a range of contrast levels shall be provided.	✓ See: Instruction B
(k) Software shall not use flashing or blinking text, objects, or other elements having a flash or blink frequency greater than 2 Hz and lower than 55 Hz.	✓
(l) When electronic forms are used, the form shall allow people using assistive technology to access the information, field elements, and functionality required for completion and submission of the form, including all directions and cues.	✓

Instruction A

Our user interface uses multiple keyboard hotkeys to gain access to its elements.

Accessing the elements of the Ribbon Bar and Command Menu

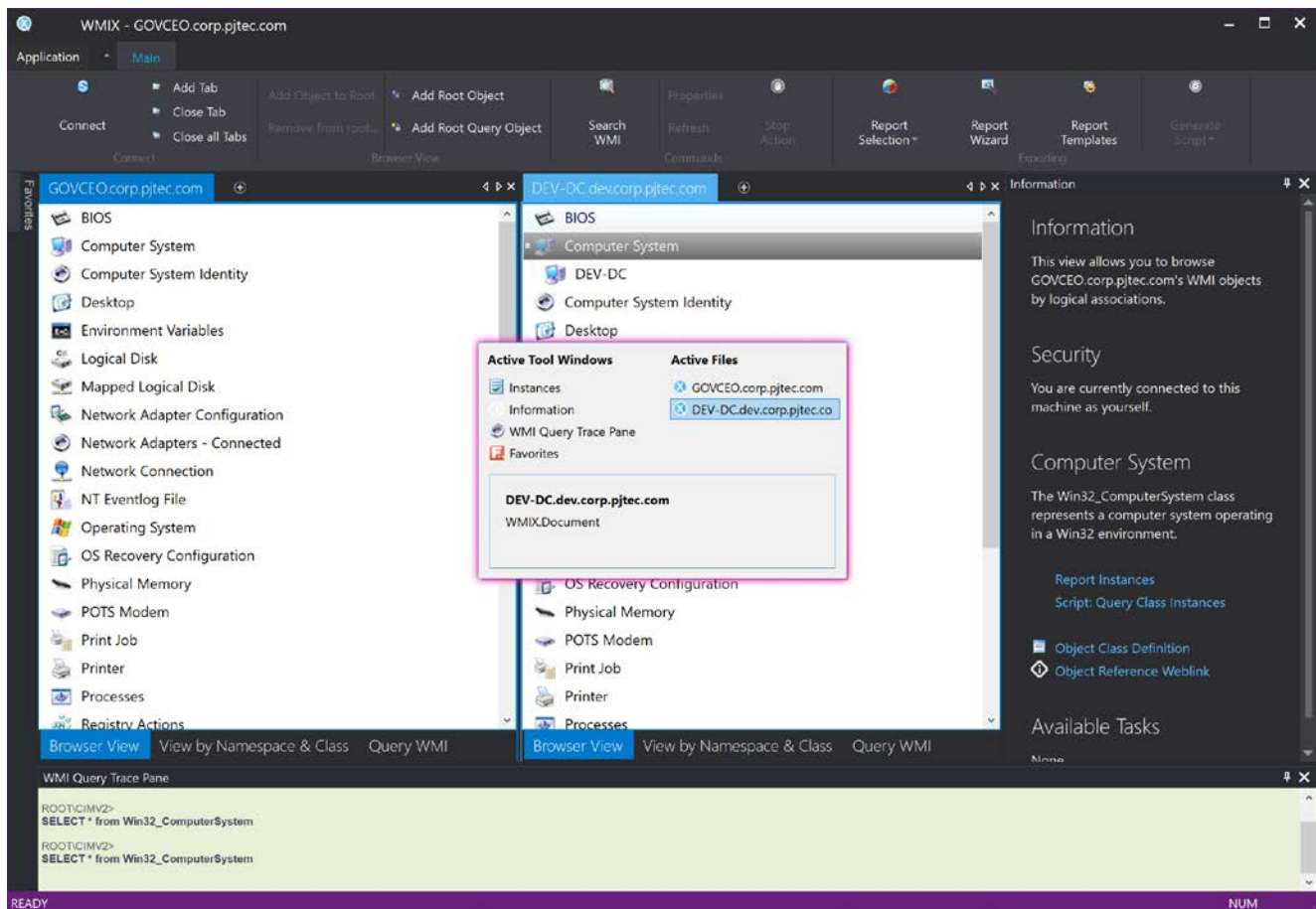
1. Press and release the **Alt** key to display the keyboard shortcuts of every element of the Ribbon Bar as well as the Command Menu.
2. Type the letters for the desired element to either activate it or disclose a series of sub-selections.
3. Once the Ribbon Bar area holds the focus, you can also use the **TAB** key to navigate from one element to another.



Accessing the main views and docking panes

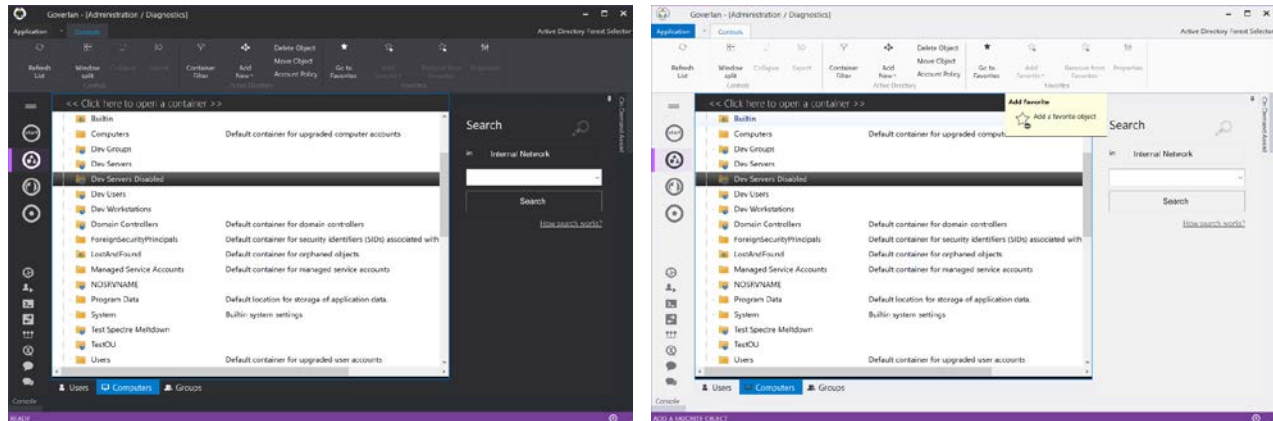
The user interface may contain one or more main views as well as multiple docked panes. For instance, the WMIX interface (shown below) includes a main window for each connected machine as well as a Favorites Section, WMI Query Trace, Instances and Information docked windows.

To move the focus from one window to another, use the **Ctrl+Tab** or **Alt+F7** key combinations. These key strokes trigger the Window Selection utility which allows you to navigate to the desired window within the interface using the arrow keys.



Instruction B

Our user interface exposes a dark and light color mode to accommodate users in need of a high contrast mode:



Conclusion

Our products are designed to comply with Section 508. They can be used with or without the use of a mouse device and provide a range of color configurations including a high-contrast color mode. If you have any suggestions on how to improve this process or if you want to report any issues related to Section 508 compliance, please contact us via www.goverlan.com/support.

Publication Information

This document was written by Pascal Bergeot, Chief Technology Officer of Goverlan, Inc.

Published by Goverlan, Inc. - www.goverlan.com

Copyright © 2015~2018 - Goverlan, Inc.

Authorized for redistribution.

Goverlan® is a registered trademark of Goverlan, Inc. This publication may contain the trademarks and service marks of third parties and such trademarks and service marks are the property of their respective owners.

THE SPECIFICATIONS AND INFORMATION REGARDING THE PRODUCTS AND SERVICES IN THIS PUBLICATION ARE SUBJECT TO CHANGE WITHOUT NOTICE. ALL STATEMENTS, INFORMATION, AND RECOMMENDATIONS IN THIS PUBLICATION ARE BELIEVED TO BE ACCURATE BUT ARE PRESENTED WITHOUT WARRANTY OF

ANY KIND, EXPRESSED OR IMPLIED.